



Z Gold Resources El Sid Mine, Eastern Desert, Egypt



Background

- ✓ **Z-Gold** Resources established in 2009, a limited liability joint venture between Quartz Core mining and Nuinsco Resources working in exploring precious metals, specially gold.
- ✓ **Z.Gold** Resources operating in EL-Sid, Fawakhir and Attallah Gold dumps and Tails Project Located in the Eastern Desert of Egypt.

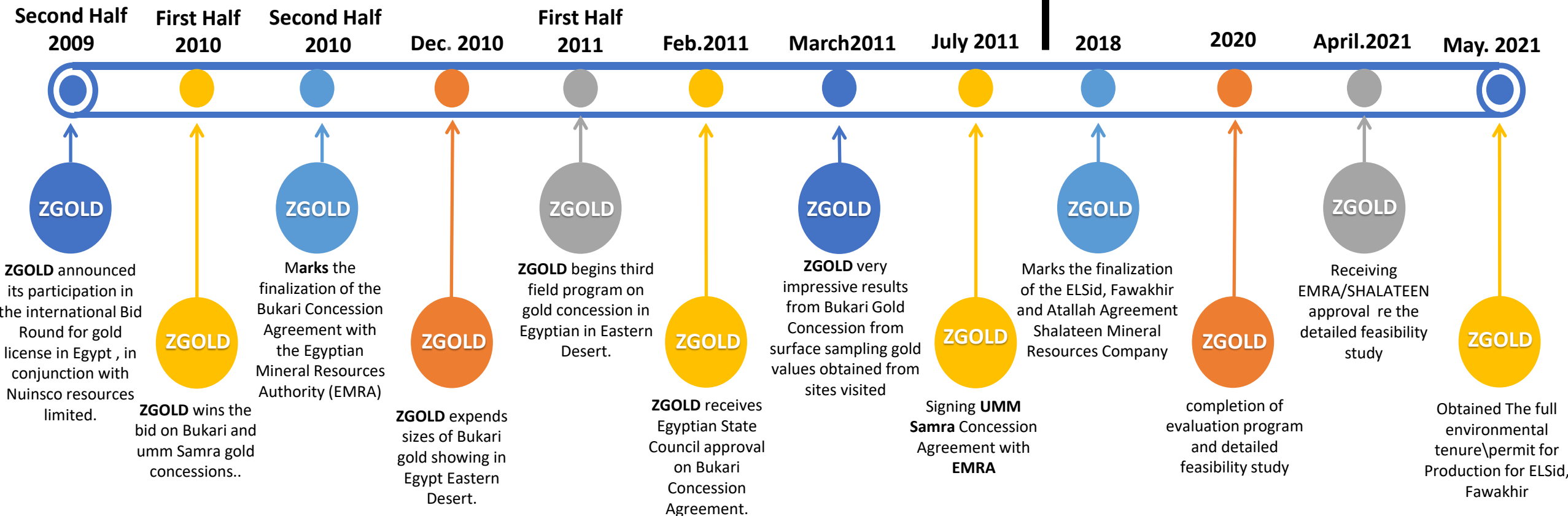
- ✓ Historic estimates put the total available dumps and tailings material located at the el Sid mine-site at >300kt grading circa 3 g/t Au.
- ✓ An agreement with Shalateen Resources granted the right to evaluate/ exploit the dumps and tails via a production sharing model. Commercial terms already finalized, and D.F.S is achieved that permits the economic development of the project.



Location	ElSid, Fawakhir and Atallah
Ownership	100%
Commodity	Gold & Silver
Project Status	Evaluation

Previous

Present



Gold in Elsid, Fawakhir Area

El Sid Dumps

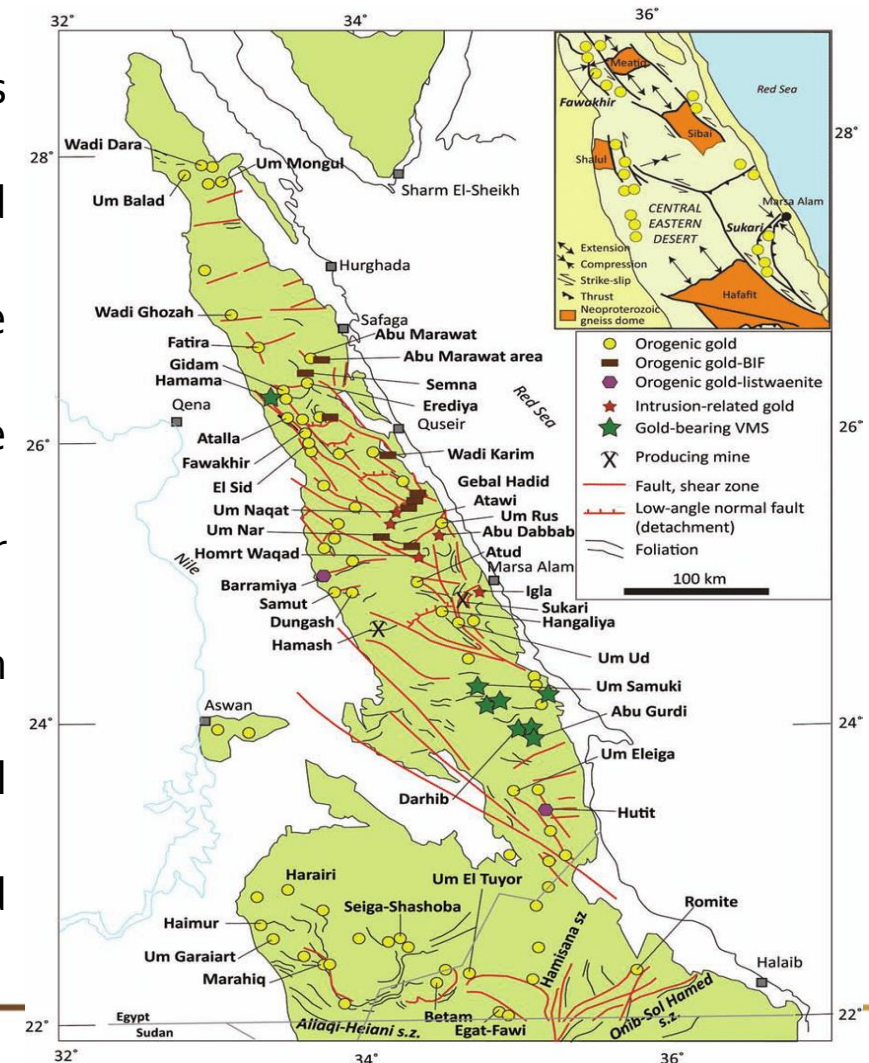
Location

- Located in the Eastern Desert of Egypt.
- Approximately 90km west of the Red Sea coast.
- Nearest population centre is the town of Quseir on the coast, 90 km from project.
- International Airport located at Marsa Alam approximately 150km from the project by road.
- Dumps and tailings are stacked adjacent to a main metalled road that connects the Red Sea coast with the Nile valley.
- Site of a “modern” mining operation dating from the late 1940s.
- Logistically very easy.



Gold Evaluation in Elsid, Fawakhir area in Eastern Desert, Egypt

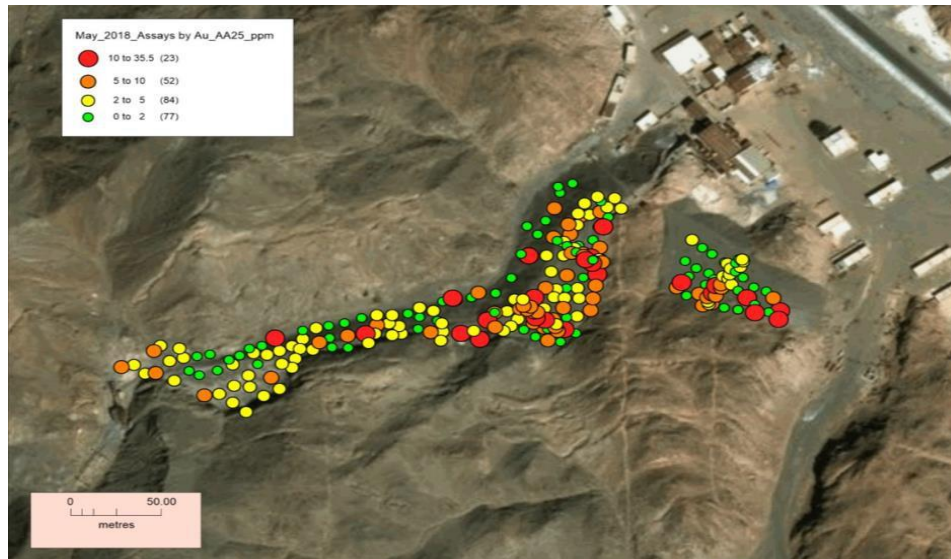
The Arabian-Nubian Shield (ANS) is a rapidly emerging world-class province for gold resources mainly in structurally-controlled quartz \pm carbonate veins that are best classified as late Neoproterozoic orogenic gold deposits. Gold has been mined in the Eastern Desert of Egypt, in the northwestern part of the ANS, for >6000 years, that is since the times of the Pharaohs, but production prior to the 1900s was likely only about 25 t and mainly from alluvial workings. In the first half of the 1900s, about 7 t Au was recovered from the El Sid gold deposit.



El Sid Dumps Evaluation

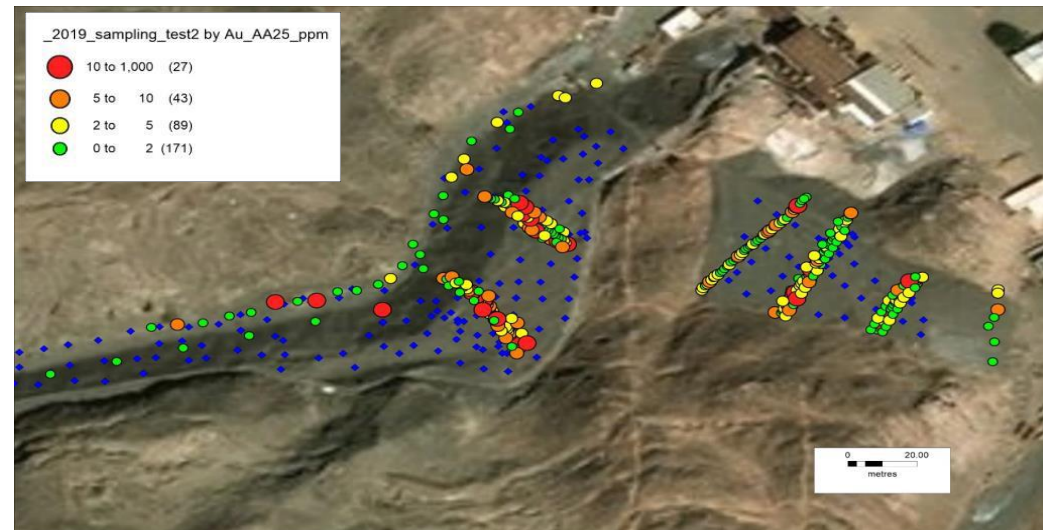


El Sid Dumps



- Google Earth image showing topography and infrastructure at El Sid mine waste piles.
- Above, 2018 - mainly surface samples collected from around the waste piles
- Right, 2019 – mainly trench samples to evaluate grades internal to waste piles
- Blue points (to right) location of 2018 samples

- Samples collected to date average 4.1g/t gold
- Grade variation is distributed throughout the waste pile – no obvious concentration of high or low grade domains
- Gold mineralisation occurs throughout waste piles – entire tonnage of waste pile is feed for operation



El Sid Dumps

Conclusions

- Well located site , logistically very simple
- Government enthusiastic participant
- Local workforce available
- Very good infrastructure
- Gold bearing rock is already mined and at surface, already partially processed
- No mining necessary at all
- Good gold grade – room for improvement with addition of material from other sites
- Metallurgy demonstrates good gold recoveries by gravity and leaching methods
- Good commercial terms have been negotiated
- Low capital cost
- Very rapid development
- Revenue measured in months from commencement of development
- Very rapid capital payback and substantial return on investment
- Production from other sites possible – ongoing project, multi-year



Thank You