



GOLD EXPLORATION AND EXPLOITATION EL HUDI DISTRICT AREA-ASWAN

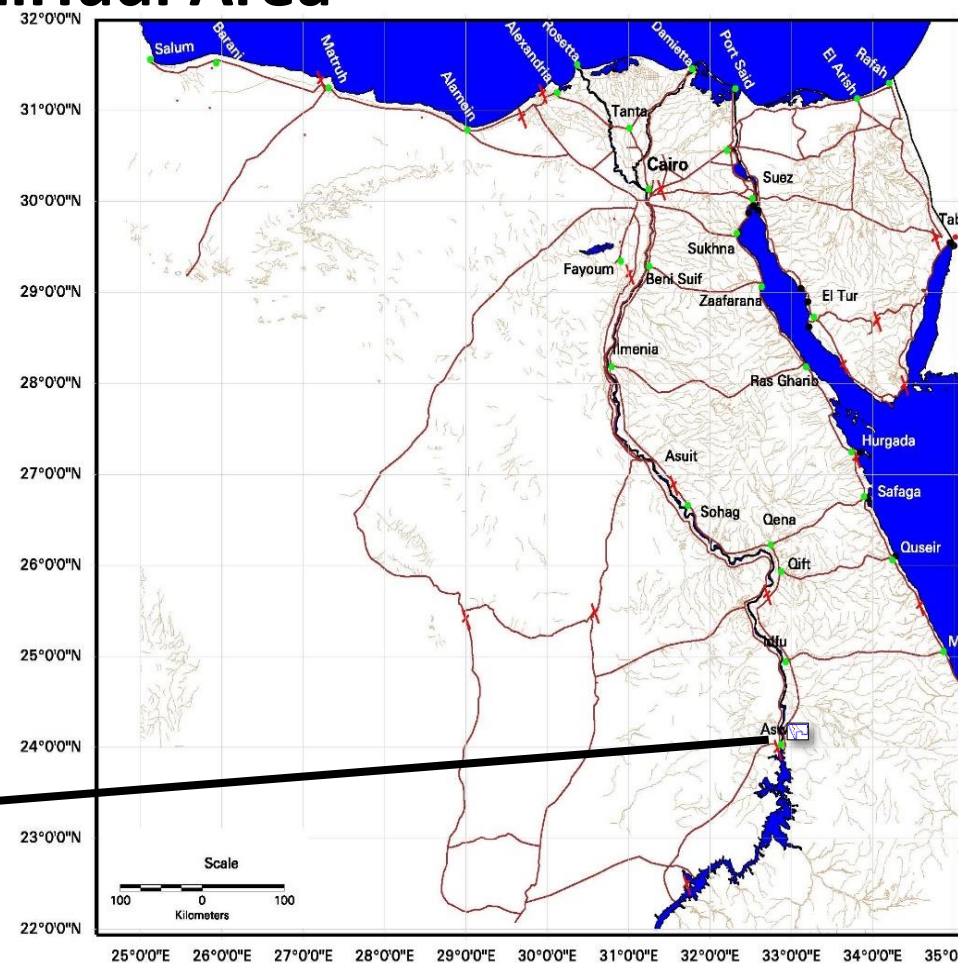
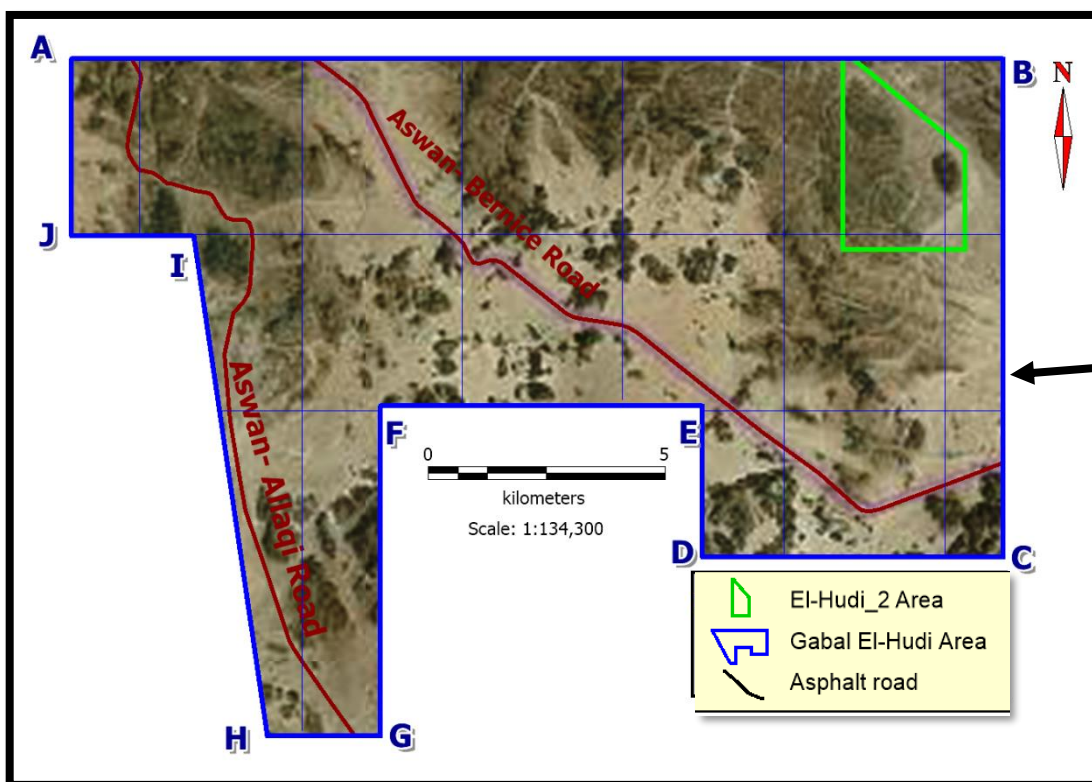
South Eastern Desert, Egypt

**LOCAL JUNIOR
WITH INTERNATIONAL STANDARDS**

Gold in ElHudi Area

Exploration and Mining location

Egypt Salt & Mineral Resources (EGYSA) operating in El-Hudi_2 and Gabal El-Hudi Concession areas , located at the southeastern part of Aswan city in the South Eastern Desert of Egypt.



It covers an area of

- 1- Hudi_2 about 8 Km² (Mining & Production) .
- 2- Gabal El-Hudi about 173.9 Km² (Exploration).

Note : "El-Hudi_2 is located inside Gabal El-Hudi license "

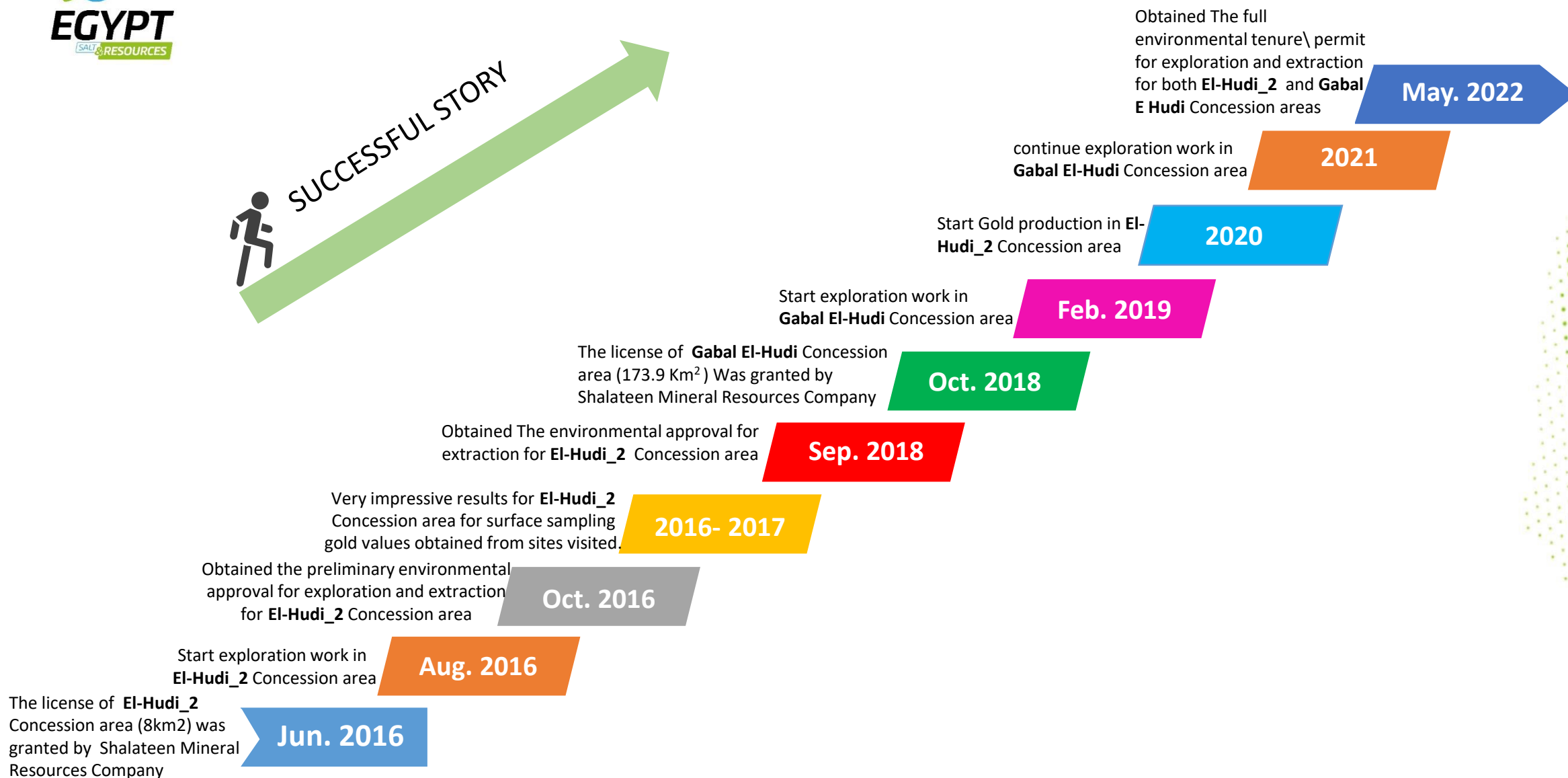
The Company



Egypt Salt & Mineral Resources is a gold exploration & mining company exploring hard rock deposits in the South eastern Desert of Aswan, Egypt . The company completed a geological mapping and sampling program across 4 square kilometers of the El-Hudi_2 & Gabal El-Hudi Concession areas.

A History of Exploration Success

- Over 16 years of exploration success.
- Management continuity.
- One of Egypt's most experienced exploration companies.
- The only company that obtained full environmental tenure\ permit for exploration and production for both EL Hudi 2 and Gabal El Hudi concessions.
- Tens of surveys and expeditions have been researched in Wadi al-Hudi by geologists and archaeologists motivated by the grade potential for the inscriptions and archaeology addressing central questions regarding mining , ancient Egyptian state history.

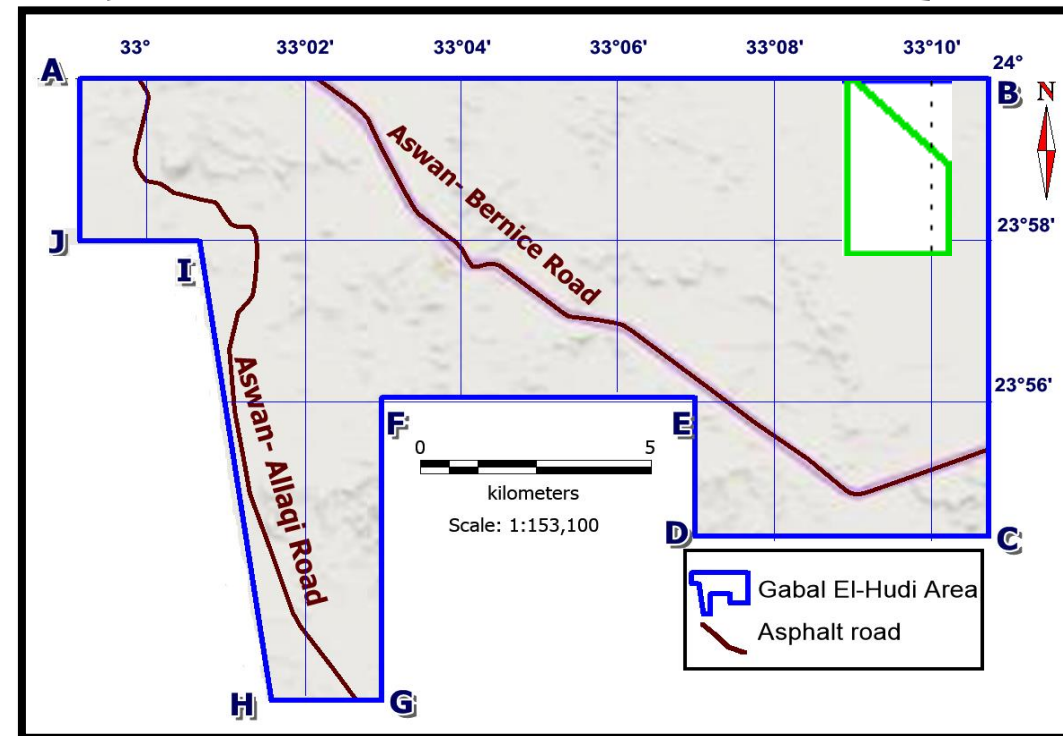




Gabal El Hudi & El Hudi_2

Location

- The El-Hudi license is located approximately 28 minutes' drive east of Aswan, easily accessible from the newly constructed Aswan-Berenice Road.
- Both licenses are easily accessible and located approximately 42 km southeast Aswan city.
- It can be easily reached through Aswan-Bernice road (35 km) and then about 7 km along the desert track of Wadi El-Hudi northwards.
- Northern boundary of Both licenses are accessible also from Aswan town along Aswan-Bernice road (about 17 km). Both Aswan-Bernice and Aswan-Allaqi roads are passing through Both licenses area with a distance about 19 and 16.5 km respectively.
- Aswan International Airport is located only 57 km from El-Hudi_2 concession area.



El Hudi

Exploration

- Gold exploration surveys at Both licenses areas were carried out between 2016 and 2023.
- Sampling and trenching programs were conducted between 2016 and 2023.
- Approximately 5388 samples were collected (incl QA/QC samples) in the field
- Approximately 2562 samples were submitted for analysis. samples were collected from around the project for gold assay.
- More than 57 trenches have been conducted, along mineralized zones of quartz veins and alteration zones. They were carried out using mechanical excavators; commonly for about one meter in case of narrow zone but up to 5-6 meters were achieved for the broad zone.
- **(EGYSA)** reports high-grade trench results.



Gabal El Hudi

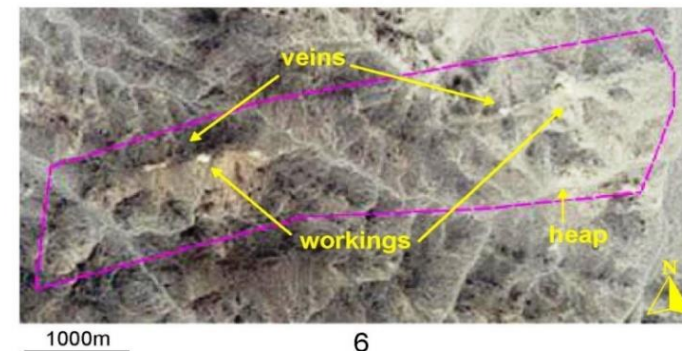
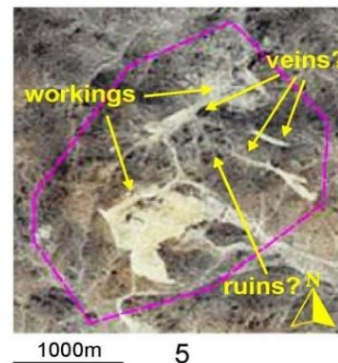
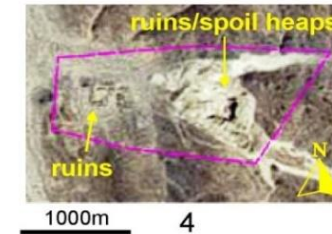
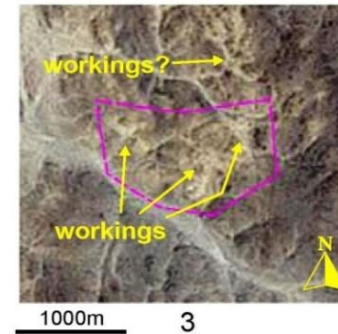
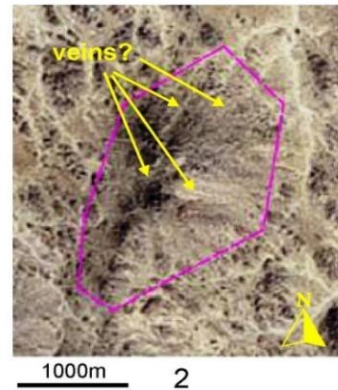
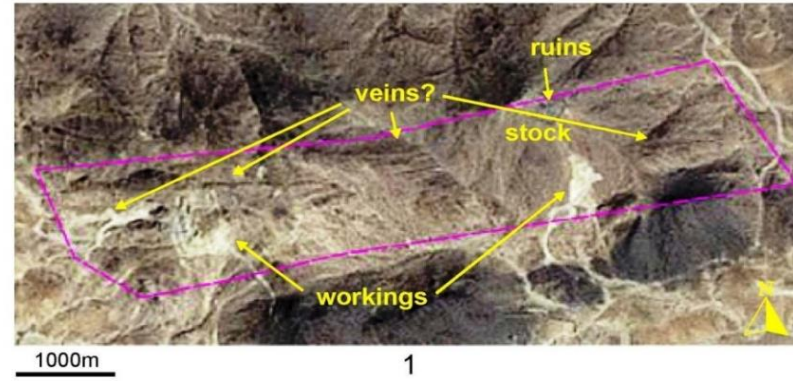
Exploration

The exploration program was initiated by a Desk Study, Reconnaissance , grab sampling , remote sensing technique and then followed by a detailed geological mapping, geological and geochemical investigations at selected areas. digging trenches, composite sampling, and extracting gold ore which stored in the ore stockpiles.

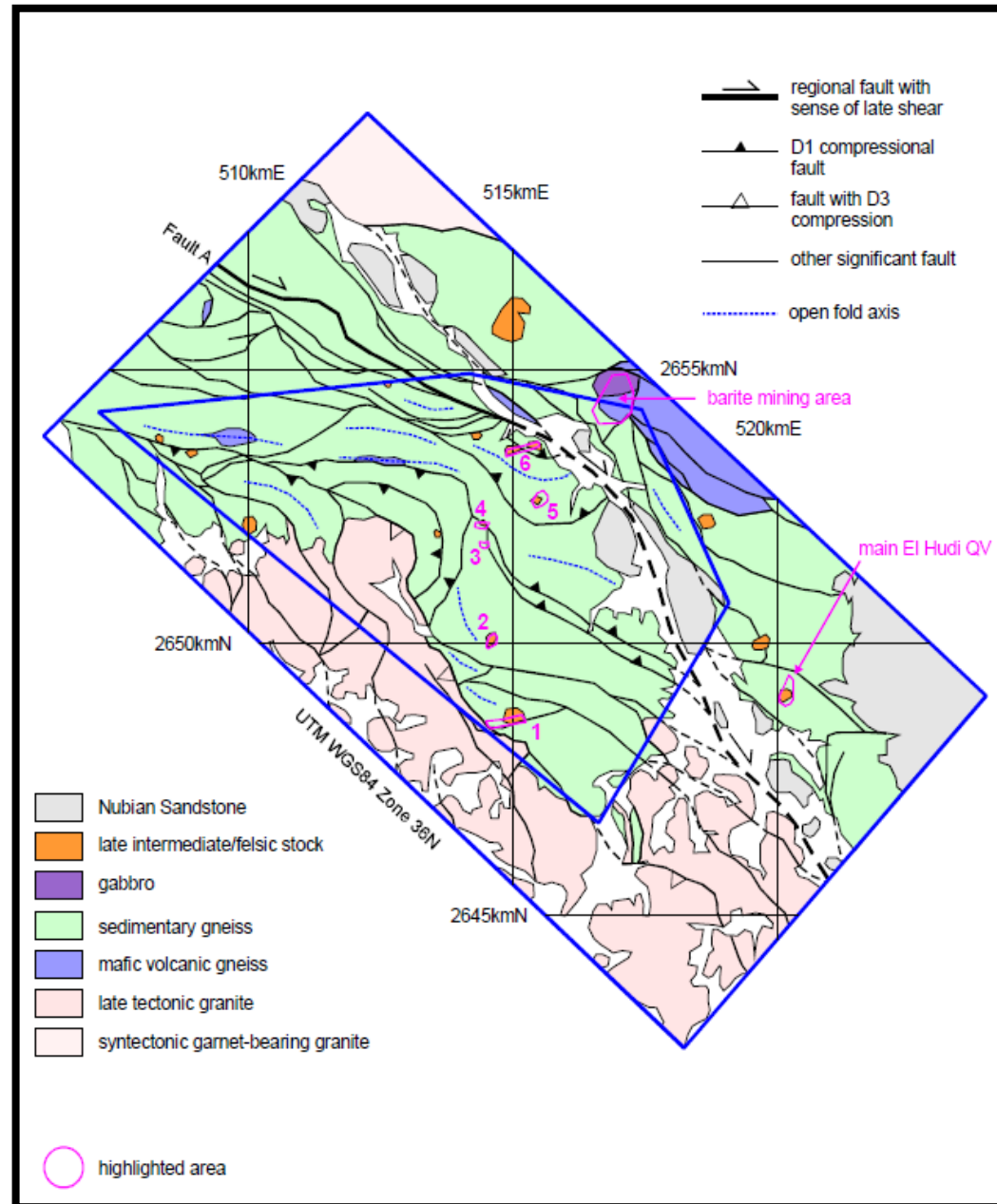
<ul style="list-style-type: none"> • SPOT imagery • Landsat 8 OLI • Aster 	(EGYSA) Identified 6 Prospect Areas As Per Satellite Imagery
Geological Mapping	In 2019 (EGYSA) Completed its Geological Survey And Mapping Summer Work Program at El-Hudi_2 & Gabal El-Hudi Concession Areas.
Trenching	(More Than 50 Trenches) was conducted, along mineralized zones of quartz veins and alteration zones with a follow-up program of channel and grab sampling.
Geochemical Exploration	Geochemical exploration was carried out on the six highlighted areas at Gabal El-Hudi concession area to delineate the mineralized zones of quartz veins, alteration zones and bed rocks. Particular attention was given to the identification of type, degree and amount of rock alteration.
AREA_1	<ul style="list-style-type: none"> • Biggest prospect for drilling • All veins return gold result (Strong gold results Peak at 22.0 g/t and 19.92 g/t).
AREA_5	<ul style="list-style-type: none"> • Strong gold results Peak at 57.7 g/t and 41.8 g/t. • Two significant zones of strong gold results at area_5 property.
AREA_6	The area_6 offer the greatest potential for a bedrock gold resource.

Highlighted areas

(EGYSA) identified 6 prospect areas as per satellite imagery



Highlighted areas



Gabal El Hudi

Exploration PHASE 1 (2022-2023):

- Subsequent work program to build on the results of Phase 1(2019-2020) work. Mapping and sampling will continue and will include structural mapping, trenching and pitting will continue to constitute a significant portion of the fieldwork. The most significant part of Phase 1 (2022-2023) will be the commencement of Geophysics survey and diamond drilling to begin the process of characterizing subsurface extension of mineralization observed at surface.

PHASE 1 (2022-2023) :-

- 10 months of field work, regional mapping, sampling (500 outcrop hand channel samples) to enhance existing targets and generate new ones
- Mapping program to determine structural controls on gold mineralization of Hudi Mountain
- Six months use of an excavator for deep trenching (up to 2,000 samples)
- Four months use of excavator , Grader (and other) for construction of drill-pads and drill road access
- 4-5 months of diamond-core drilling up to 2,500 m (sampling up to 2,500 m drill core) with 1 or 2 rigs. Program will comprise :
 - 1)Drilling at Hudi Mountain (AREA_1) where gold mineralization has already been identified.
 - 2)Reconnaissance drilling of new targets based on trenching results.
- Up to 5000 samples (1 kg) from outcrop, mineralized, trenches, and drill holes, including QAQC. Analyses to be conducted at ALS Izmir (gold and multi-element analysis
- Duplicate of all crushed samples (1kg each) transport from field to Shalateen.
- “LIDAR high-res survey and DGPS surveying of all drill hole collars and trench locations” over Hudi mountain.
- Preliminary metallurgical test work.

Gabal El Hudi Exploration



Gabal El Hudi

Exploration



EL Hudi 2 Concession Production

The Plant



EL Hudi 2 Concession Production

The Plant



EL Hudi 2

Metallurgical Testing

- Metallurgical results on rock conducted by Vancouver based laboratory (MET-SOLVE)
- Initial test work on gravity concentration with either flotation or cyanide leaching
- Results, tabulated below, demonstrate very good gold recoveries using conventional methods

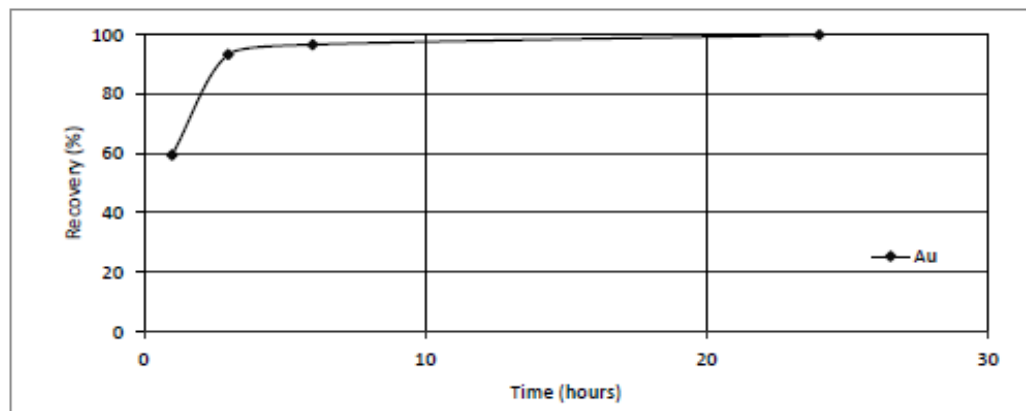


CYANIDATION TEST REPORT

Client: Nuinsco
Test: GJ101
Sample: Elhudi Gravity Concentrate

Date: 9/19/2018
Project: MS1883

Products / Time	Sol. Wt. (g)	Assay (ppm)	Distribution (%)
		Au	Au
1 hour	1615.2	87.40	59.4
3 hours	1604.7	137.00	93.2
6 hours	1588.8	142.00	96.6
24 hours	1575.8	147.00	99.9
Residue	1049.3	0.25	0.1
Calculated Head	1051.9	225.85	100.0
Assayed Head		210.57	



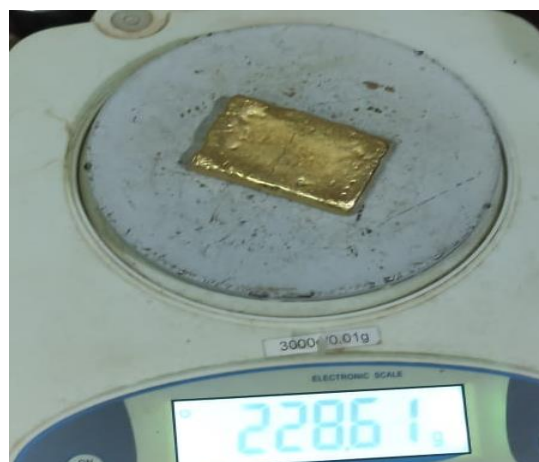
Time (hours)	pH	Lime (10%)		NaCN (g/L)	NaCN (g) added		DO (mg/l)	DO (%)
		(g) added	(kg/t)		(g) added	(kg/t-solids)		
0	11.59	5.60	0.53	0.00	31.56	30.00	8.0	83
1	11.73	0.00	0.53	14.70	8.36	37.95	5.7	61
3	11.65	0.00	0.53	22.94	0.00	37.95	5.5	59
6	11.84	0.00	0.53	23.50	0.00	37.95	7.1	80
24	11.55	0.00	0.53	22.94	0.00	37.95	7.4	79

Test Conditions

Initial Solids:	1,051.9 g	Final Solids:	1049.3 g
Initial Solution:	1,578.0 g	%wt loss:	0.25 %
Solids:	40 %	NaCN Consumption:	2.68 kg/t solids
Initial NaCN:	20.0 g/L	Test Duration:	24 hours
Target pH:	11.5-12.0	Sepro Leach:	1 kg/t solids
Lime Addition:	0.53 kg/t solids		

EL Hudi 2 Concession Production

Our Gold Production



EL Hudi 2 Concession

Conclusions

- Well located site , logistically very simple
- Government enthusiastic participant
- Local workforce available
- Very good infrastructure
- Good gold grade – room for improvement with addition of material from other sites
- Metallurgy demonstrates good gold recoveries by gravity and leaching methods
- Good commercial terms have been negotiated
- Low capital cost
- Very rapid development
- Revenue measured in months from commencement of development
- Very rapid capital payback and substantial return on investment
- Production from other sites possible – ongoing project, multi-year



EGYPT

SALT & RESOURCES

Thank You